



KQ500 Fixed Gas Detector

Product Overview:

With the rapid industrial development, there are more and more occasions that people contact with the harmful gas, and there are more and more hurting to the health of human beings. Humans is aware of the importance of protecting themselves when they develop industry. So, various harmful gas alarm became the essential protecting equipment in safe industrial production.

KQ500 series fixed gas detector (also called gas transmitter): with years of experience in designing and producing detector, we develop our new product with electrochemical sensor. It can be widely used in metallurgy, petrol, petrification, chemistry, light industry, coking, municipal administration, gas, pharmacy, sewage dealing and many other special industries and fields. It can detect various gases such as flammable gas, O₂、H₂S、CO、HCN、NO₂、SO₂、NH₃、HCL、CL₂、H₂ etc. The device adopts intrinsic safety type channel design, standard 4~20mA two wires signal output. It can transfer data in long distance, can get into the DSC system directly. The detector has high sensitivity, quick response, long lifetime, polarization time and many other characteristics; it is among the first class in similar products in China.

Main features:

- It can detect more kinds of gas. high precision
- Fixed explosion-proof shell; it's safe and reliable
- Standard 4-20mA electric current output, compatible with existing alarm control unit or DSC (distributed control system).
- Imported sensor, high sensitivity, rapid response, stable and reliable
- operation is simple; easy installation and maintenance

Technical parameters:

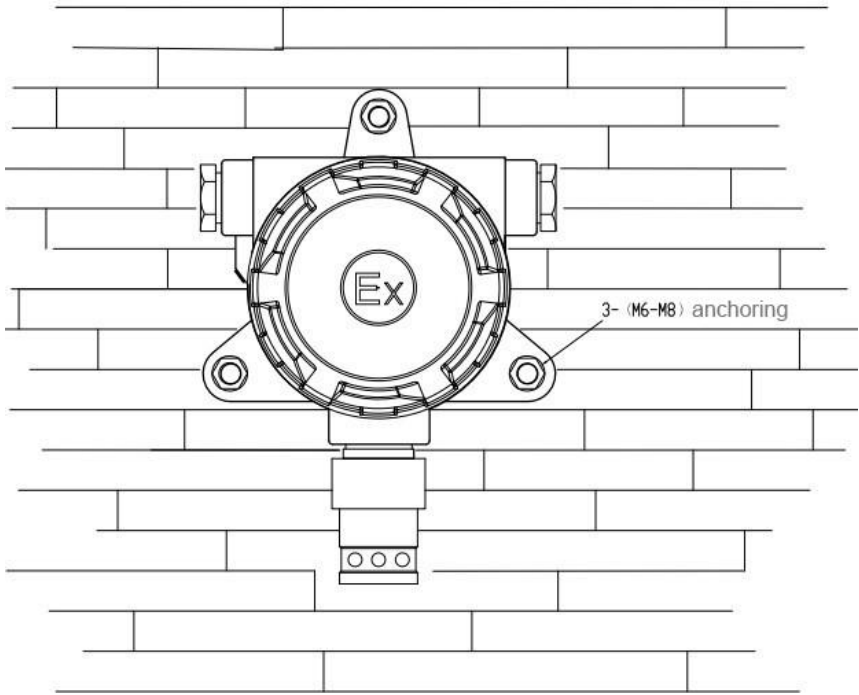
Detecting Gas	combustible gas, toxic gas, oxygen
Working Temperature	toxic gas: - 20 ℃ ~ + 50 ℃ Combustible gas: - 40 ℃ ~ + 70 ℃
Relative Humidity	≤90% R . H . no condensation
Technical Parameters	Working voltage: 16~30VDC
	Working current: KQ500-EX is 120mA, others ≤50 mA
	Output signal: 4 ~ 20mA standard signal two wire type output (KQ500-EX three wire type)
Sensor	electrochemical sensor; catalytic combustion type sensor for KQ500-EX
Respond Time	T90<30s
Weight	≤900g
Fixing Parameters	Fixing type: wall-mounted type
	Transition cable: two core shield cable (KQ500-EX uses three core shield cable), section 2×1.5mm ² , external diameter ϕ 10mm
	Transmission distance ≤1000m
Explosion-proof Level	Exd IICT6(used for explosion proofing detector); ExialICT4(used for intrinsic safety type detector)
Protection Class	IP66

Product Information Chart

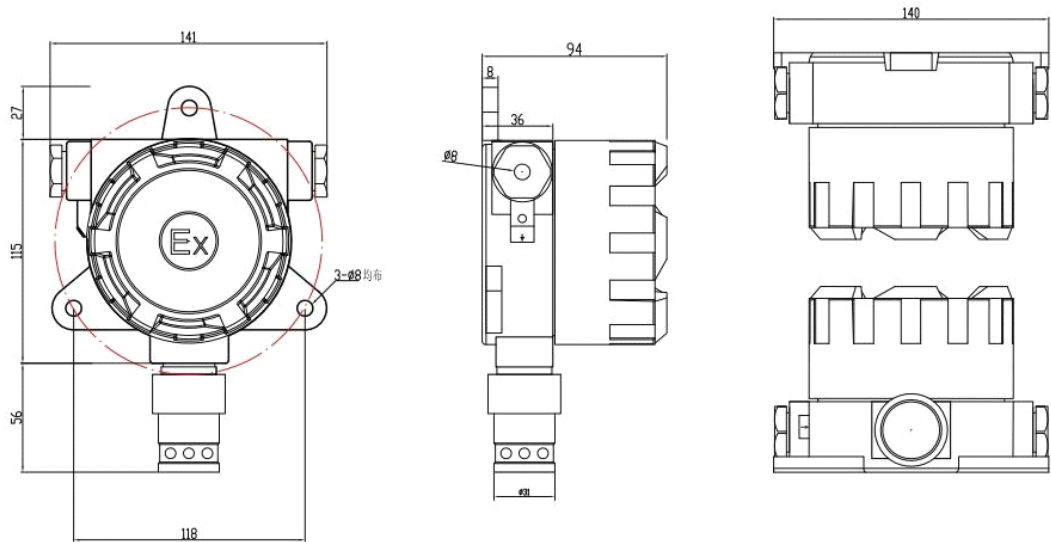
Product Model	Detected Gas	Measuring Range	Resolution	Respond Time (T90)	Sensor Life
KQ500-EX	combustible gas	0-100%LEL	1%LEL	≤30s	3-5years
KQ500-O ₂	O ₂	0—30%vol	0.1%vol	≤15s	2-3years
KQ500-CO	CO	0—1000ppm	1 ppm	≤15s	2-3years
KQ500-H ₂ S	H ₂ S	0—100ppm	1 ppm	≤15s	2-3years
KQ500-HCN	HCN	0—20ppm	0.1 ppm	≤30s	2-3years
KQ500-CL ₂	CL ₂	0—20ppm	0.1 ppm	≤30s	2-3years
KQ500-O ₃	O ₃	0—5ppm	0.01 ppm	≤25s	2-3years
KQ500-NH ₃	NH ₃	0—200ppm	1 ppm	≤30s	2-3years
KQ500-H ₂	H ₂	0—1000ppm	1 ppm	≤30s	2-3years
KQ500-NO ₂	NO ₂	0—20ppm	0.1 ppm	≤25s	2-3years
KQ500-PH ₃	PH ₃	0-20ppm	0.1 ppm	≤15s	2-3years

KQ500-C3H3N	C3H3N	0-100ppm	1ppm	≤15s	2-3years
KQ500-NO	NO	0-250ppm	1ppm	≤25s	2-3years
KQ500-HCL	HCL	0-20ppm	0.1ppm	≤25s	2-3years
KQ500-SO2	SO2	0—20ppm	0.1ppm	≤15s	2-3years
As for unlisted detected gas and measuring range, please contact with our company					

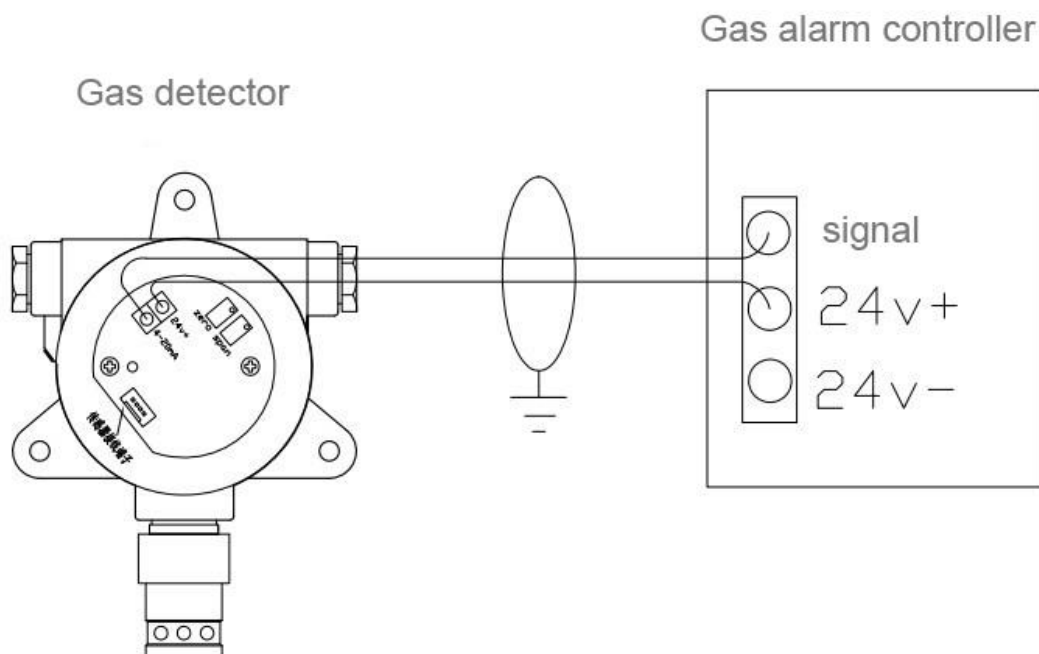
KQ500 Fixed Gas Detector Installation



KQ500 Fixed Gas Detector Dimension



Two wire connection of KQ500 FIXED GAS DETECTOR



Three wire connection of KQ500 FIXED GAS DETECTOR

