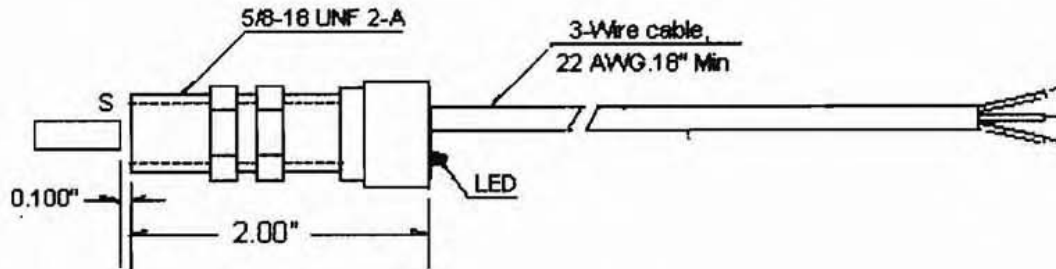


Hall-Effect Proximity Sensors



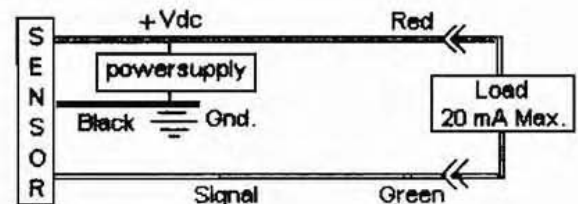
P/N H.E. 200-34

SPECIFICATIONS

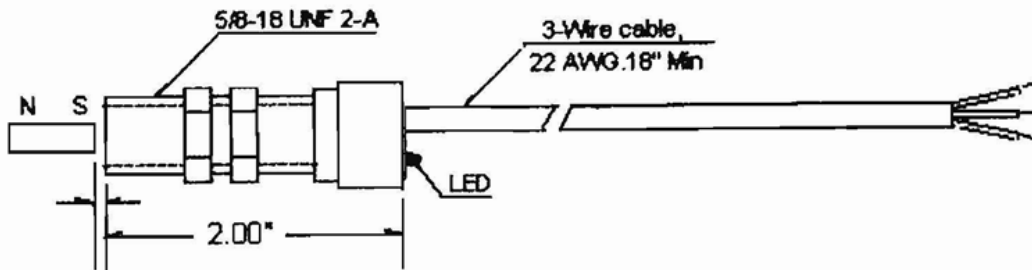
5 TO 24 VDC SUPPLY VOLTAGE
 LOAD CURRENT----- 20 Ma Max
 REPEATABILITY:----- 010"
 LEADS SIZE:----- 22 AWG. STRANDED
 RESPONSE:-- 1 TO 10,000 PULSES/SECOND
 L.E.D. ----- OPTIONAL
 OIL/WATER----- RESISTANT
 SHOCK AND VIBRATION----- RESISTANT
 TEMP RANGE:----- 040 TO 250 F
 Sensor Type:.. .N.O. NPN (Sinking)
 Gap Distance:-----0 to 0.100"
 South side of Magnet turns Switch ON

FEATURE AND BENEFITS:

COMPATIBLE WITH DIGITAL LOGIC
 REVERSE Battery PROTECTION
 NEEDS ONLY AN UNREGULATED SUPPLY
 SOLID STATE RELIABILITY
 OPEN COLLECTOR 25 ma. OUTPUT
 RESISTANT TO PHYSICAL STRESS



Hall-Effect Bi-Polar Ring Gear Sensors



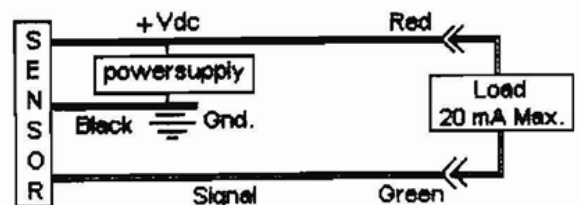
P/N H.E. 200-B1

SPECIFICATIONS

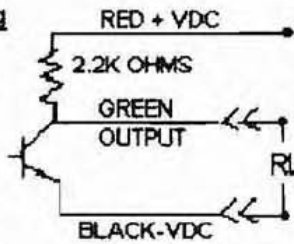
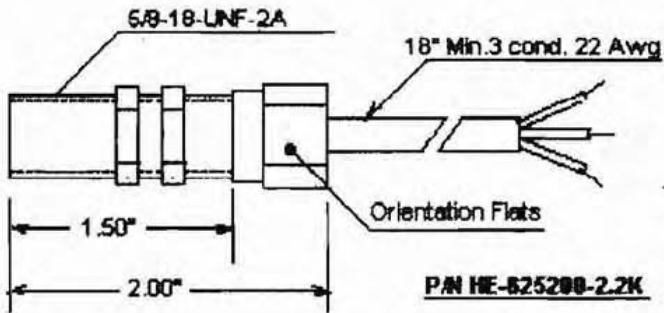
5 TO 24 VDC SUPPLY VOLTAGE
 LOAD CURRENT----- 20 Ma Max
 REPEATABILITY:----- 010"
 LEADS SIZE:----- 22 AWG. STRANDED
 RESPONSE:-- 1 TO 10,000 PULSES/SECOND.
 L.E.D. ----- OPTIONAL
 OIL/WATER----- RESISTANT
 SHOCK AND VIBRATION----- RESISTANT
 TEMP.RANGE:----- 040 TO 250 F
 Sensor Type:... ..N.O. NPN (Sinking)
 Gap Distance:----- 0 to 0.100"
 South side of Magnet turns Switch ON
 North side of Magnet turns Switch OFF

FEATURE AND BENEFITS:

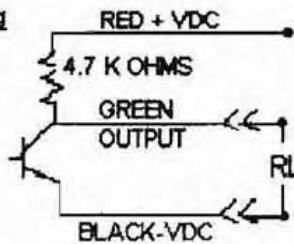
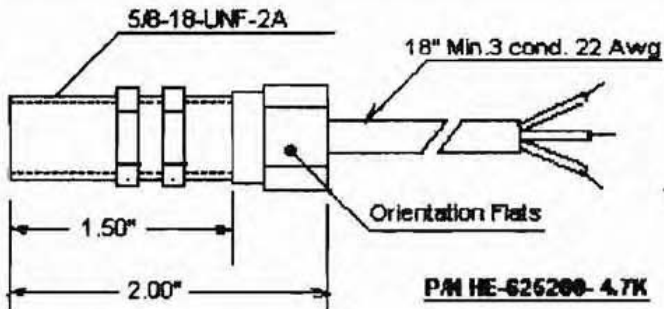
COMPATIBLE WITH DIGITAL LOGIC
 REVERSE BATTERY PROTECTION
 NEEDS ONLY AN UNREGULATED SUPPLY
 SOLID STATE RELIABILITY
 OPEN COLLECTOR 25 ma. OUTPUT
 RESISTANT TO PHYSICAL STRESS



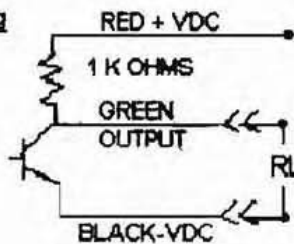
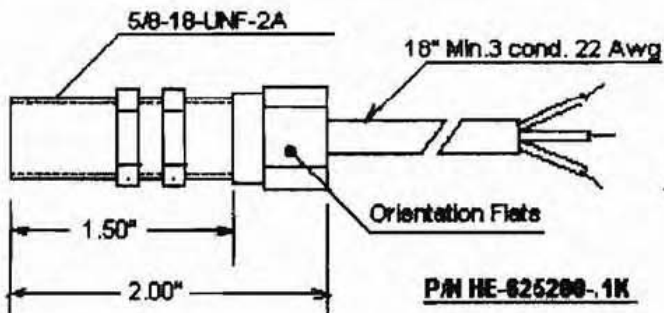
Hall-Effect Zero Speed Sensors



SUPPLY VOLTAGE: 5.- 25 VDC
@ 20 Ma. Max.
TEMP- RANGE:-40 to 257 F
OUTPUT SIGNAL:
LOW =400 MV MAX.@ 20 mA. SINK
HIGH= $\frac{RLX 5V.}{RL+2.2 K}$



SUPPLY VOLTAGE: 5.- 25 VDC
@ 20 Ma. Max.
TEMP- RANGE:-40 to 257 F
OUTPUT SIGNAL:
LOW =400 MV MAX.@ 20 mA. SINK
HIGH= $\frac{RLX 5V.}{RL+4.7 K}$



SUPPLY VOLTAGE: 5.- 25 VDC
@ 20 Ma. Max.
TEMP- RANGE:-40 to 257 F
OUTPUT SIGNAL:
LOW =400 MV MAX.@ 20 mA. SINK
HIGH= $\frac{RLX 5V.}{RL+ 1 K}$